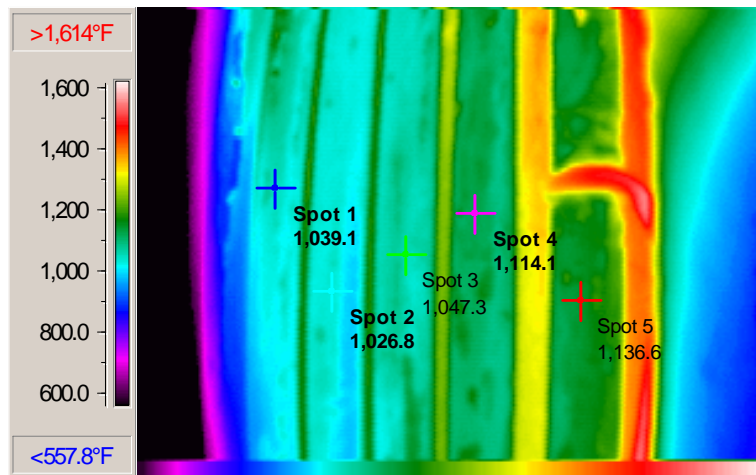


# Infrared Services/Thermographic Surveys

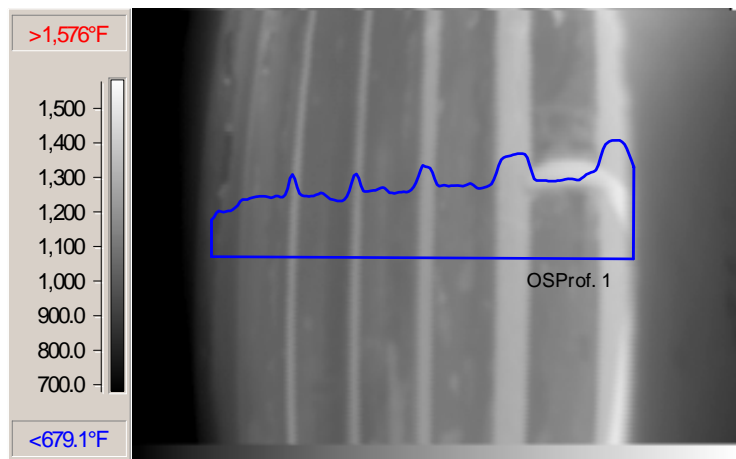
Black is hot in this infrared image of southeast end of east wall



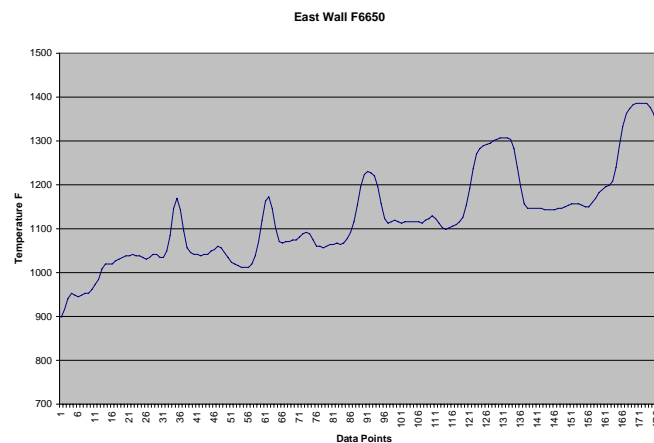
Color infrared image of tubes with temperatures of five tubes on the east wall, taken from southeast inspection port



Line scan through tubes on the east wall.



Temperature profile: tubes are the lower values, peaks are wall temperatures.



**GOODALL INFRARED SERVICES**

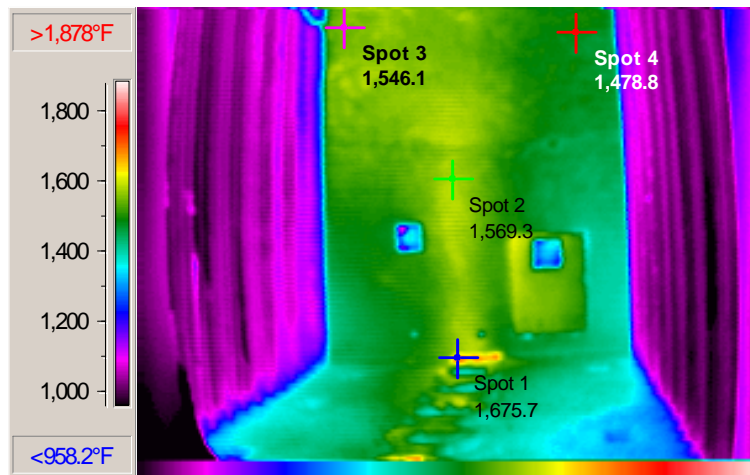
P.O. BOX 18677  
Seattle, WA 98118  
(206) 722-0544

# Infrared Services/Thermographic Surveys

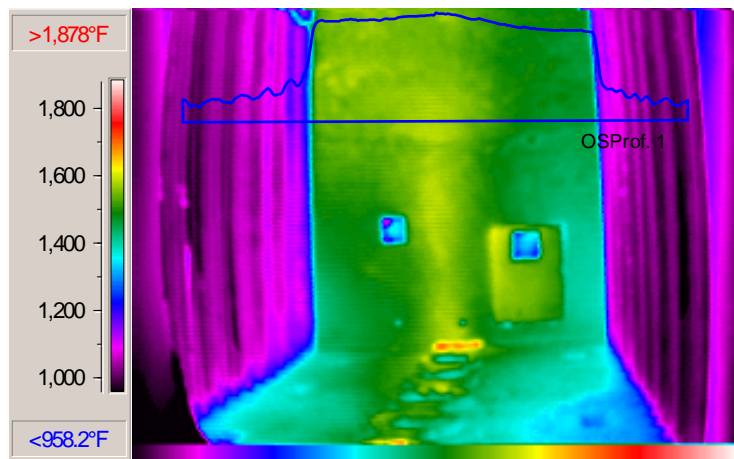
Color image of east wall, south wall and burners



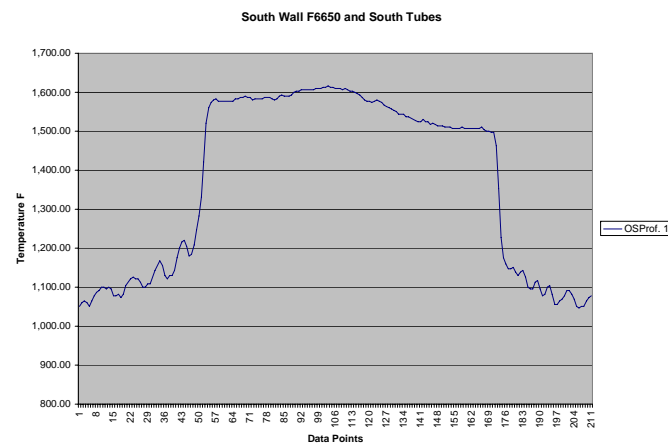
Infrared image taken from northwest inspection port. Several temperatures were taken of the wall and the south most burner.



Line scan taken through east wall tubes, south wall above inspection ports and west wall tubes, southend



Profile generated from image at the left

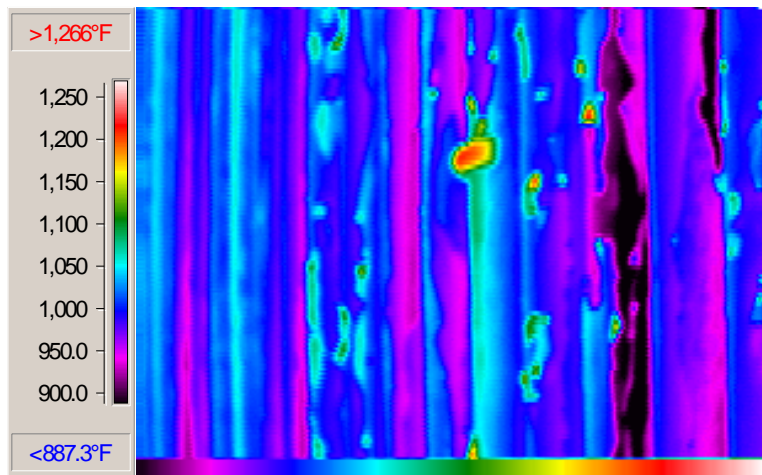


**GOODALL INFRARED SERVICES**

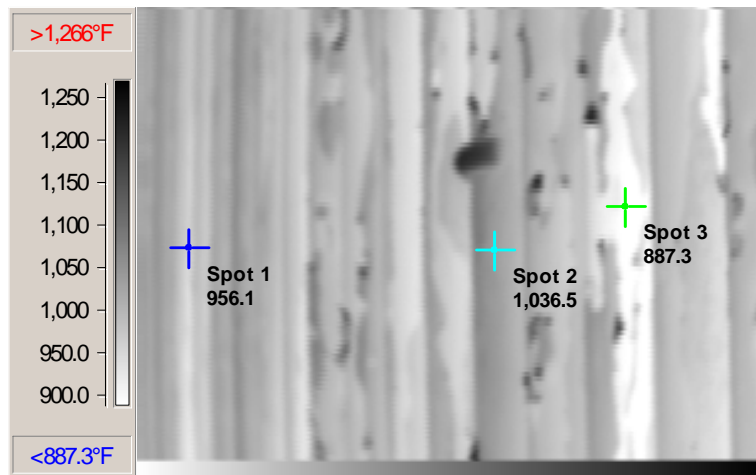
P.O. BOX 18677  
Seattle, WA 98118  
(206) 722-0544

# Infrared Services/Thermographic Surveys

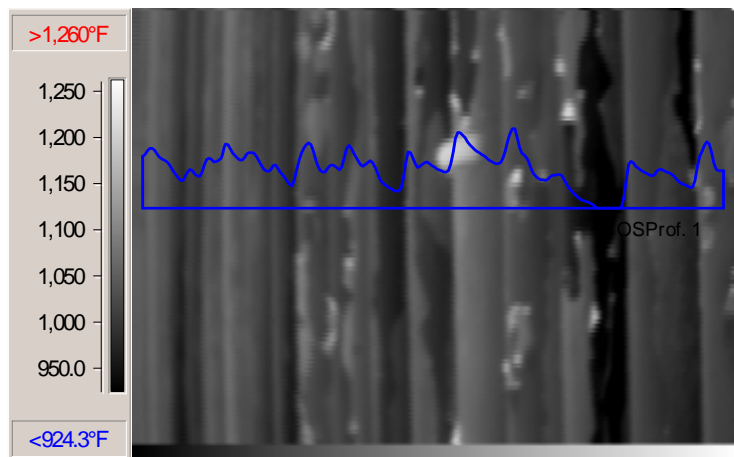
Infrared color image of center TI on west wall taken from northeast inspection port



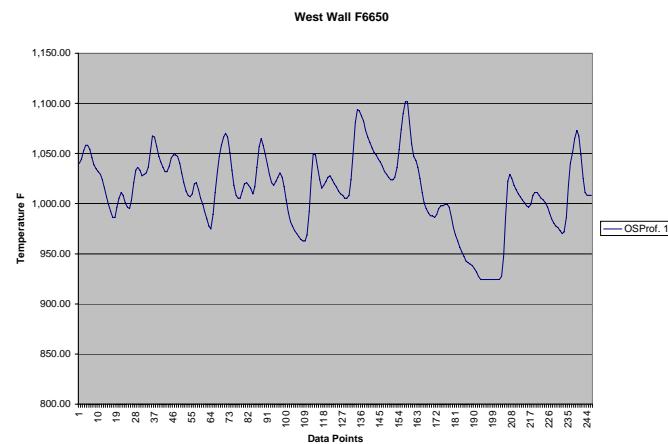
Black is hot in this infrared image



Line profile through tubes, white is hot in this image



Temperature profile from the image at the left



**GOODALL INFRARED SERVICES**

P.O. BOX 18677  
Seattle, WA 98118  
(206) 722-0544